

PROFESSIONAL OUTDOOR GRILLS

Dynasty[™]
BY JADE PRODUCTS COMPANY



THE ART OF GRILLING.[™]

BEYOND





BOUNDARIES



By its very nature, outdoor cooking is a liberation. An escape from walls and ceilings. A chance to unleash your culinary imagination and let it roam as far as the horizon. The Dynasty™ Outdoor Series by Jade Products Company embraces the essence of grilling, combining rugged handcrafted stainless steel construction with a host of refined custom enhancements and the defiant power of 25,000-BTU burners for an unforgettable outdoor cooking experience. Whether you choose the versatility of our freestanding grills, the integration of our built-in grills, the flexibility of our à la carte grilling centers or the ultimate customization of our Talos™ outdoor cooking suite, the Dynasty™ Outdoor Series offers a grill perfectly matched to your talents. Finally, there is a grill equal to the majesty of the outdoors – and equal to any culinary adventure you can imagine.



DESIGNED TO MATCH YOUR IMAGINATION.



FREESTANDING GRILLS Commercial-quality Dynasty™ freestanding grills set the new standard for outdoor cooking, combining the power you demand with rugged stainless steel construction that's equal to the elements.



BUILT-IN GRILL ISLANDS The same commercial-quality components of our freestanding grills and à la carte grilling centers can be integrated into a built-in grill island for a custom grilling center that's uniquely yours.



From intimate backyard get-togethers to lavish outdoor gatherings, Dynasty offers the perfect grill for your entertaining style. Each of our grill families offers a variety of customization options, making it easy to create the grill of your dreams.



À LA CARTE GRILLING CENTERS

The unique Dynasty™ à la carte system gives you the freedom to build your own grilling center from the ground up with our durable, versatile side carts and powerful cooking options.



TALOS™ OUTDOOR COOKING SUITE

The limited-edition Talos™ outdoor cooking suite combines a host of rugged, powerful culinary features in a cooking center that's designed and built to meet your specifications for the ultimate in customization.





OUTDOOR COOKING HAS A NEW BENCHMARK.

Prepare to have your expectations shattered. Dynasty™ 30" and 42" gourmet grills feature 25,000-BTU Dynachrome™ cast-iron main burners with electronic ignition for powerful, even heating across the entire grilling surface and 14,000- or 16,000-BTU ceramic infrared rotisserie burners to seal in the sizzle of a tender prime rib. With vast #304 stainless steel grates and high-capacity smokers, the only limit is your creativity. And the #304 stainless steel construction, heavy-duty rotisserie motor, warming rack, surface-mount thermometer and commercial-quality casters are all equal to the elements. It's the standard by which all others will be judged.

Model DOBQ4200 42" grill shown with Model DOBB4203 42" base.



30" Dynasty™ Freestanding Gourmet Grills



30" FREESTANDING GOURMET GRILL

Model DOBQ3000

- Choose from Model DOPB3003 pedestal or Model DOBB3003 base
- Base and pedestal feature retractable side shelves and commercial-quality casters; base also features doors and slide-out tank tray
- 554 sq. in. grilling area/278 sq. in. warming rack
- Two 25,000-BTU Dynachrome™ cast burners with lifetime warranty
- 14,000-BTU ceramic infrared rotisserie burner
- Heavy-duty #304 stainless steel grates
- Welded construction
- Double-wall construction for insulation and durability
- Variable-location high-capacity smoker
- Heavy-duty two-position rotisserie system holds up to 80 lbs.
- Integrated flush-mounted thermometer
- #304 stainless steel construction
- Cordless electronic 1.5V battery ignition
- Choose Model DOBQ3001 for liquid propane (field conversion kits also available)



**25,000-BTU DYNACHROME™
CAST BURNERS DELIVER
PROFESSIONAL POWER FOR
OUTSTANDING RESULTS.**



**VARIABLE-LOCATION
HIGH-CAPACITY SMOKER
OFFERS FLAVOR AND
FLEXIBILITY.**



42" Dynasty™ Freestanding Gourmet Grills



42" FREESTANDING GOURMET GRILL

Model DOBQ4200

- Shown with Model DOBB4203 base with drawers and doors
- Base features drop-down side shelves, slide-out tank tray, commercial-quality casters and two slide-out drawers
- 800 sq. in. grilling area/404 sq. in. warming rack
- Three 25,000-BTU Dynachrome™ cast burners with lifetime warranty
- 16,000-BTU ceramic infrared rotisserie burner
- Heavy-duty #304 stainless steel grates
- Welded construction
- Double-wall construction for insulation and durability
- Variable-location high-capacity smoker
- Heavy-duty two-position rotisserie system holds up to 80 lbs.
- Integrated flush-mounted thermometer
- #304 stainless steel construction
- Cordless electronic 1.5V battery ignition
- Choose Model DOBQ4201 for liquid propane (field conversion kits also available)



**16,000-BTU INFRARED
ROTISSERIE BURNER
SEALS IN JUICES TO
LOCK IN FLAVOR.**



**#304 STAINLESS STEEL
CONSTRUCTION WITHSTANDS
THE RIGORS OF THE
OUTDOORS WITH EASE.**



Dynasty™ Built-In Gourmet Grills



CREATE AN ISLAND VACATION SPOT. For some, the grill is more than just a place to cook. It is a monument to backyard getaways. Create your own paradise with Dynasty™ built-in grills and accessories. Start with your custom island cabinetry; add a 30" or 42" Dynasty™ gourmet grill; and finally, complete your culinary oasis with Dynasty™ custom cooking components and accessories to truly release your creativity.

Model DOBQ3000 30" built-in grill shown with Model DOAD3003 30" double access doors.

FREESTANDING/BUILT-IN GRILL ACCESSORIES

For additional built-in accessories, see the Dynasty™ À La Carte Options on page 12.



13" Single Side Burner
Model DOGB1304
(freestanding only)



Spice Trays
Model DOSR1102



18" Bar-Tender™
Model DOBT1802



Warming Drawer
Model DOWD3002



Rotisserie Cradles
30" Model DORC3002
42" Model DORC4202



LP Tank/Trash Drawer
Model DOT50003



Double Access Doors
30" Model DOAD3003
42" Model DOAD4203
(18" single-door Model DOAD1803 also available)



3-Drawer Storage Unit
Model DOSD1307
(2-drawer unit Model DOSD1306 also available)



Rotisserie Light
Model DORL0002



Griddle Plate
Model DOGP1202

ADDITIONAL OPTIONS

Built-In Grill Covers

30" Model DOBC3002
42" Model DOBC4202
55" Model DOBC5502
(fits 42" built-in grill and 13" side burner)

Freestanding Grill Covers

30" Model DOFC3002
42" Model DOFC4202

Charcoal Box

Model DOCB1202
(available May 2004)

Insulated Sleeves For Installation In Combustible Cabinetry

30" Model DOIS3003
42" Model DOIS4203

Conversion Kits

Natural Gas Model DONG0000
Liquid Propane Model DOLP0001



THE END OF COOKIE-CUTTER COOKING.

Great chefs know that a meal is more than just a main dish. It requires a subtle layering of flavors from complementary – and often surprising – side dishes. The Dynasty™ à la carte outdoor cooking system gives you the power to complement your gourmet grill for a complete culinary experience. Durable #304 stainless steel modular carts integrate seamlessly with our freestanding grills, providing the perfect platform for our collection of commercial-quality culinary components. Carts can be connected in a straight line or angled toward the chef for ease of use, combining the features of a built-in grill with the flexibility of a freestanding grill for an outdoor cooking center that is a reflection of your diverse tastes. And all in a unique portable design that allows you to take it with you to your next dream home.

Model DOBQ3000 30" freestanding grill shown with 30" base, two angled carts, two 18" side carts, 13" Bar-Tender™ beverage center, 13" double side-burner unit, one 2-drawer storage unit and one 3-drawer storage unit.



Dynasty™ À La Carte Outdoor Cooking System



Model DOBQ4200 42" freestanding grill shown with base, two angled carts, two 30" side carts, 30" Bar-Tender™ beverage center, outdoor kitchen and two 30" bases with double access doors.

EXPAND YOUR PALETTE. Dynasty™ à la carte side carts turn your freestanding grill into a customized grilling center, adding storage options and a host of gourmet culinary tools to your outdoor menu.





COMPLETE THE DINING EXPERIENCE.

Fine wine. Laughter. The shifting hues of the setting sun. So many elements combine to make a meal memorable. Put the pieces together with the Dynasty™ à la carte system. Our bases and accessories turn your Dynasty™ freestanding gourmet grill into a complete outdoor cooking center. Select 18" or 30" bases with storage drawer units, then add the outdoor cooking options that match your culinary style. Each one adds unique functionality to our powerful gourmet grills and features the same commercial-quality construction for lasting durability. With a complete array of Dynasty™ à la carte options, the possibilities are endless.

À LA CARTE BASES



Model DOBB1803
18" base shown with
Model DOSD1306
2-drawer storage unit.



Model DOBB1803
18" base shown with
Model DOSD1307
3-drawer storage unit.



Model DOBB3003 30" base.



Model DOAC1203
angled cart lets you
attach side carts at
a 45° angle.



Dynasty™ À La Carte Options

18" BASE OPTIONS



Model DOAB1304 single side burner delivers 17,500 BTUs of cooking power for the outdoor gourmet.



Model DOAB1305 double side burner adds two 17,500-BTU burners, making it easy to cook several dishes at once.



Model DOBT1302 Bar-Tender™ beverage center keeps a variety of spirits and garnishes within easy reach.



Model DOSS1302 InfraSear™ infrared searing station features a 18,000-BTU burner to seal in savory juices and lock in the flavor of fine meats. (available May 2004)

30" BASE OPTIONS



Model DOBT3002 Bar-Tender™ beverage center lets you complement any meal with a fine wine or well-chosen cocktail.

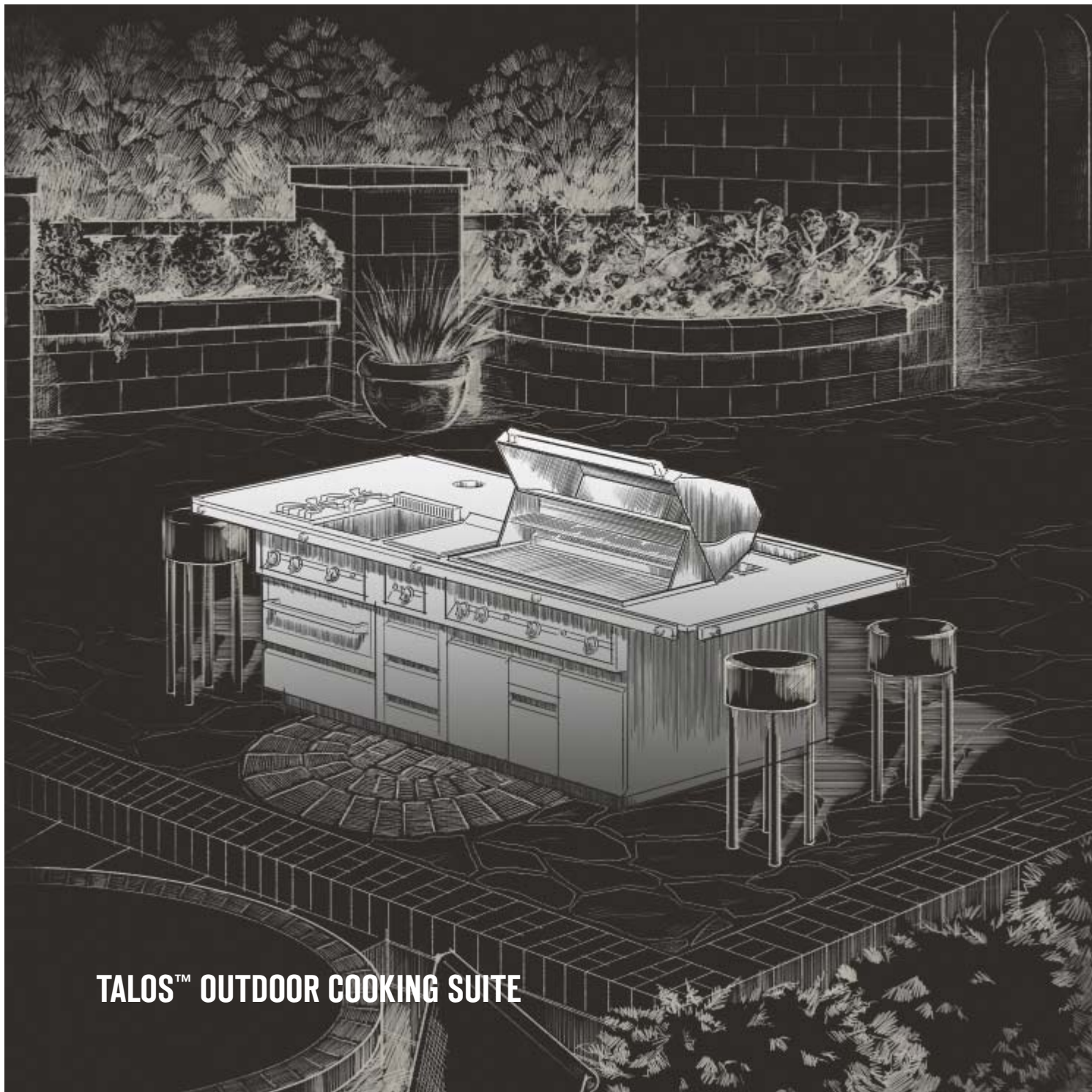


Model DOPS3002 prep station adds a wide-open space to your grill with a butcher-block cutting board and stainless steel wells.



Model DOOK3002 outdoor kitchen combines a stainless steel griddle and two 17,500-BTU burners – it's a complete kitchen at your fingertips. (available May 2004)

All Dynasty à la carte options may also be used for built-in installation.



TALOS™ OUTDOOR COOKING SUITE

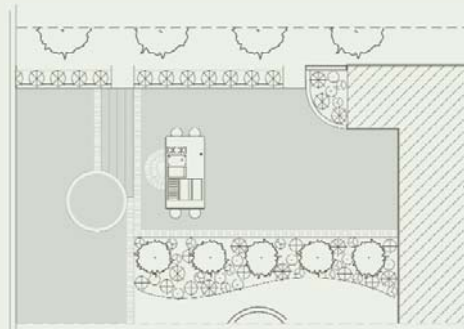
EPIC PROPORTIONS.

Greek mythology tells of Talos, a bronze giant wrought by the god of fire and metal who ruled over his domain with sheer strength and a superhuman ability to withstand flame.

Inspired by this legend, Dynasty presents the Talos™ outdoor cooking suite. This limited-edition custom cooking center is, simply put, myth made real in stainless steel. More than just a grill, the Talos™ cooking suite is an open-air professional kitchen filled with the commercial-quality features top chefs demand. Rugged, handcrafted #304 stainless steel construction. Burner power beyond your wildest expectations. A commercial-capacity rotisserie. A dedicated InfraSear™ searing center. Convenient side burners. A durable stainless steel griddle. Preparation areas with butcher-block cutting boards. A warming drawer. Large storage drawers and doors. Even a chilled beverage center with the option of an aftermarket keg tap.

Each Talos™ outdoor cooking suite is one of a kind, custom-specified for your culinary needs and designed from the ground up for your setting. Every Talos™ suite is handcrafted to our exacting standards and installed by our team of experts, creating a powerful focal point for outdoor entertaining and an unforgettable cooking experience for the true outdoor epicurean.

EVERY TALOS™ SUITE IS A
UNIQUE COOKING INSTRUMENT
DESIGNED AND BUILT TO MEET
THE CHEF'S SPECIFICATIONS.



Because of the unique nature of this product, the Talos™ suite is not readily available from Dynasty™ dealers. Contact Jade® customer service (800-794-5233) to learn more about creating your own customized Talos™ outdoor cooking suite.

42" & 30"

Dynasty™ Freestanding Gourmet Grill Specifications

SIZES	42"	30"
MODELS	DOBQ4200/4201	DOBQ3000/3001
Total Main Burner BTUs	75,000	50,000
25,000-BTU Dynachrome™ Main Burners	3	2
Infrared Rotisserie Burner BTUs	16,000	14,000
Rotisserie Motor Capacity – lbs.	80	80
Cordless 1.5V Electronic Ignition	•	•
Natural Gas/LP Models Available	•	•
Gas Conversion Kit Available	•	•
CONSTRUCTION		
Welded, Lined Hood	•	•
Stainless Steel Grates	4	3
Built-In Flush-Mount Thermometer	•	•
Warming Shelf	•	•
Variable-Location High-Capacity Drop-In Smoker Tray	•	•
DIMENSIONS		
Overall Height – in. (cm)	26 ¼ (66.7)	26 ¼ (66.7)
Width – in. (cm)	42 (106.7)	30 (76.2)
Depth Including Handle – in. (cm)	28 ¼ (71.8)	28 ¼ (71.8)

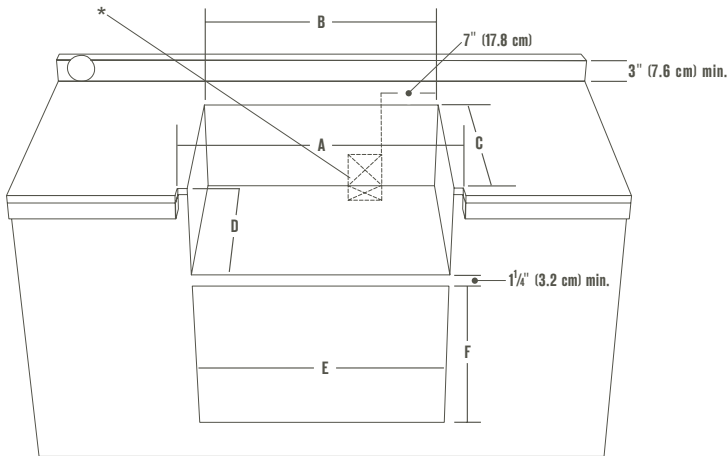
42" & 30"

Dynasty™ Base/Pedestal Specifications

SIZES	42"	30"	
MODELS	DOB4203	DOB3003	DOP3003
Style	Base	Base	Pedestal
Storage Doors	2	2	
Small Storage Drawer	•		
Large Storage Drawer	•		
Commercial Casters/Locking	2/2	2/2	2/2
Drop-Down Side Shelves	2	2	2
LP Tank Tray	•	•	
DIMENSIONS			
Height – in. (cm)	36 ⅝ (93.0)	36 ⅝ (93.0)	36 ⅝ (93.0)
Width – in. (cm)	42 (106.7)	30 (76.2)	30 (76.2)
Depth – in. (cm)	25 ⅞ (63.8)	25 ⅞ (63.8)	25 ⅞ (63.8)

Note: All Dynasty™ Outdoor Series grills are ETL-approved for residential installation. Consult the installation instructions that accompany each product for complete dimensions. Jade Products Company reserves the right to change specifications without notice.

Dynasty™ Cutout Dimensions For Built-In Installation – in. (cm)



*Requires a 4" x 4" (10.2 cm x 10.2 cm) minimum rear or bottom cutout for gas line connection as indicated by the shaded area.

GOURMET GRILLS (IN NONCOMBUSTIBLE CABINERY)

Models	A	B	C	D
DOBQ30	30 1/8 (76.5)	29 (73.7)	24 1/2 (62.2)	11 1/4 (28.6)
DOBQ42	42 1/8 (107)	41 (104.1)	24 1/2 (62.2)	11 1/4 (28.6)

GOURMET GRILLS (IN COMBUSTIBLE CABINERY)**

Models	A=B	C	D
DOBQ30	29 7/8 (75.9)	25 1/8 (63.8)	12 1/4 (31.1)
DOBQ42	41 7/8 (106.4)	25 1/8 (63.8)	12 1/4 (31.1)

**Must use insulated sleeve.

ACCESS DOORS

Models	E	F
DOAD13O3	12 1/4 (31.1)	19 1/4 (48.9)
DOAD18O3	16 3/8 (41.6)	19 3/8 (49.2)
DOAD30O3	28 3/8 (72.1)	19 3/8 (49.2)
DOAD42O3	40 3/8 (102.6)	19 3/8 (49.2)

COOKING COMPONENTS

Models	A=B	C	D
DOAB13O4	12 (30.5)	24 1/2 (62.2)	11 1/4 (28.6)
DOAB13O5	12 (30.5)	24 1/2 (62.2)	11 1/4 (28.6)
DOOK30O2	28 1/4 (71.8)	24 1/4 (61.6)	11 1/4 (28.6)
DOPS30O2	28 1/4 (71.8)	24 1/4 (61.6)	11 1/4 (28.6)
DOSS13O2	12 (30.5)	24 1/2 (62.2)	11 1/4 (28.6)

DRAWERS***

Models	E	F
DOSD13O6	12 1/4 (31.1)	19 1/4 (48.9)
DOSD13O7	12 1/4 (31.1)	19 1/4 (48.9)
DOTS00O3	15 (38.1)	25 1/2 (64.8)
DOWD30O2	28 1/4 (71.8)	9 3/4 (24.8)

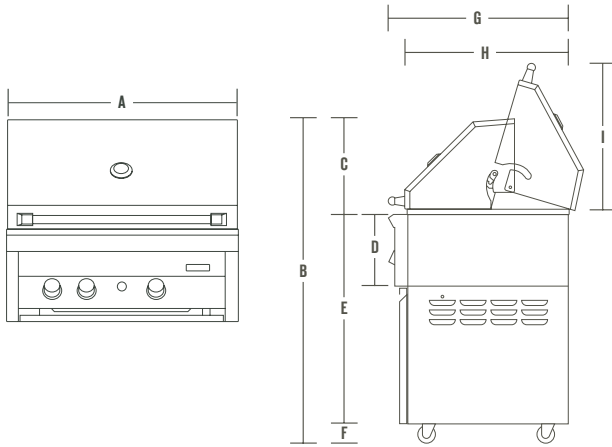
***Dynasty™ drawers require a minimum cutout depth of 21" (53 cm).

BAR-TENDER™ BEVERAGE CENTERS

Models	A=B	C	D
DOBT13O2	12 (30.5)	24 1/2 (62.2)	11 1/4 (28.6)
DOBT18O2	17 1/8 (43.5)	24 1/4 (61.6)	11 1/4 (28.6)
DOBT30O2	28 1/4 (71.8)	24 1/4 (61.6)	11 1/4 (28.6)

Note: All Dynasty™ outdoor grills are ETL-approved for residential installation. Consult the installation instructions that accompany each product for complete dimensions. Jade Products Company reserves the right to change specifications without notice.

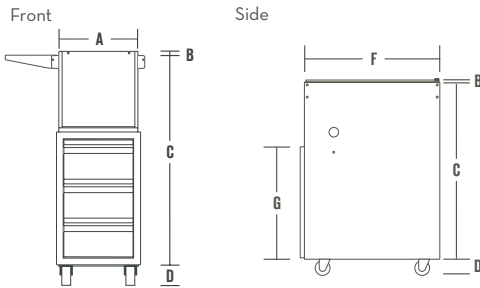
Dynasty™ Freestanding Grill Dimensions – in. (cm)



Models	A	B	C	D	E	F	G	H	I
DOBQ30	30 (76.2)	50 7/8 (129.2)	15 (38.1)	11 1/4 (28.6)	32 7/8 (83.5)	3 (7.6)	28 1/4 (71.8)	25 1/2 (64.8)	22 5/8 (57.5)
DOBQ42	42 (106.7)	50 7/8 (129.2)	15 (38.1)	11 1/4 (28.6)	32 7/8 (83.5)	3 (7.6)	28 1/4 (71.8)	25 1/2 (64.8)	22 5/8 (57.5)

Dynasty™ Base/Pedestal Dimensions – in. (cm)

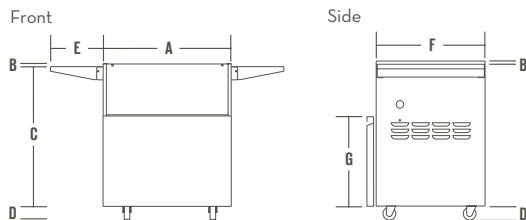
Model DOBB1803



Models	A	B	C	D	E	F	G
DOAC1203	21 5/8 (54.9)		32 7/8 (83.5)	3 (7.6)		25 (63.5)	
DOBB1803	18 (45.7)	3/4 (1.9)	32 7/8 (83.5)	3 (7.6)	12 1/8 (30.8)	25 1/8 (63.8)	20 3/4 (52.1)
DOBB3003	30 (76.2)	3/4 (1.9)	32 7/8 (83.5)	3 (7.6)	12 1/8 (30.8)	25 1/8 (63.8)	21 1/4 (54.0)
DOBB4203	42 (106.7)	3/4 (1.9)	32 7/8 (83.5)	3 (7.6)	12 1/8 (30.8)	25 1/8 (63.8)	21 1/4 (54.0)
DOPB3003	30 (76.2)	3/4 (1.9)	32 7/8 (83.5)	3 (7.6)	12 1/8 (30.8)	25 1/8 (63.8)	21 1/4 (54.0)

Note: All Dynasty™ outdoor grills are ETL-approved for residential installation. Consult the installation instructions that accompany each product for complete dimensions. Jade Products Company reserves the right to change specifications without notice.

Models DOBB3003, DOBB4203 And DOPB3003



Model DOAC1203

