



48" CLASSIC GAS RANGE SPECIFICATIONS AND PLANNING GUIDE

Model: RJGR4871C (NAT), RJGR4861C (LP)
RJGR4872C (NAT), RJGR4862C (LP)
RJGR4873C (NAT), RJGR4863C (LP)
RJGR4875C (NAT), RJGR4865C (LP)
RJGR4876C (NAT), RJGR4866C (LP)
RJGR4878C (NAT), RJGR4868C (LP)



48" CLASSIC GAS RANGE

This is Jade.

Imagine the ultimate cooking appliance. Beautiful. Robust. Easy to use and clean. An appliance that enhances the kitchen as well as the meal. Our Jade appliances are all that and more. Because we believe in a commitment to excellence. Our kitchen suites are rooted in a strong commercial heritage that has produced equipment for the world's leading chefs. Today they have been refined to inspire the cooking enthusiast with unsurpassed performance and superb style.

Each appliance has been robustly designed and crafted by hand to deliver unparalleled performance and exacting precision. And as a part of Middleby Corporation, Jade is committed to delivering an exceptional-quality product backed by unprecedented service after the sale.

As the owner of a Jade residential appliance, you are entitled to an unprecedented level of support and service after the sale. This unique program offers dedicated toll-free assistance and Priority Service scheduling should any in-home calls be required. Call toll-free **1-800-884-5233**.

FEATURES

- Stainless Steel front and sides
- Fully welded steel frame construction
- Commercial quality, cast iron burner grates
- 1,000-15,000 BTU open burners
- 500 – 10,000 BTU simmer burner
- 27,500 BTU convection oven
- 17,000 BTU infrared broiler
- 20,000 BTU chef's oven
- Accurite oven rack
- Stainless Steel adjustable legs
- Removable Stainless Steel drip trays
- Electronic ignition
- Oven volume 4.79 CF & 2.68 CF respectively
- Stub back
- Electrical requirements: 120V, 60Hz, 12A

ACCESSORIES

- Casters
- Back splash
- Solid wood cutting board
- Wok adapter
- Curb base

OPTIONS

- 12" Griddle (16,000 BTU) in place of two open burners
- 12" Griddle (16,000 BTU) and 12" Charbroiler (24,000 BTU) in place of four open burners
- 12" Charbroiler (24,000 BTU) in place of two open burners
- 12" Griddle (16,000 BTU) and 12" Wok (1,000 – 15,000 BTU) in place of four open burners
- 12" Charbroiler (24,000 BTU) and 12" Wok (1,000 – 15,000 BTU) in place of four open burners
- 24" (32,000 BTU) Griddle in place of four open burners
- Finish (SS, Red, Blue, Black)
- Gas: NAT or LP
- High back w/ shelf
- High back w/ vented shelf
- Island back



All models are CSA-approved for residential installation. If unit w/ charbroiler top is ordered w/ high back, high back w/ vented shelf has to be ordered.

Jade Range LLC A MIDDLEBY COMPANY

2650 Orbiter Street, Brea, CA 92821

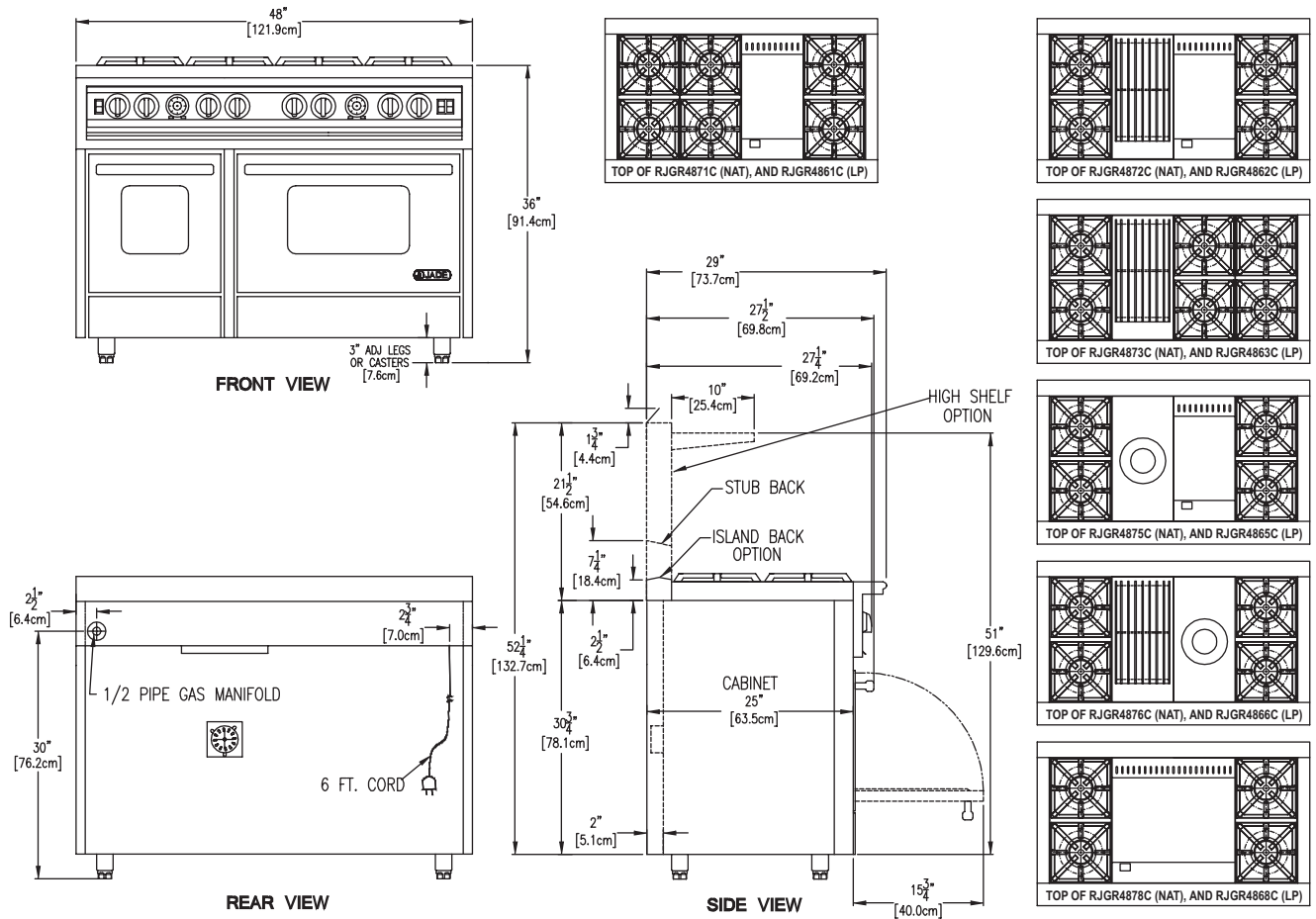
714-961-2400 • 800-884-5233 • www.jadeappliance.com

NOTES:
IN LINE WITH ITS POLICY TO CONTINUALLY IMPROVE ITS PRODUCTS, JADE RANGE, INC. RESERVES THE RIGHT TO CHANGE MATERIALS AND SPECIFICATIONS WITHOUT NOTICE.
JADE RANGE EQUIPMENT IS BUILT TO COMPLY WITH APPLICABLE STANDARDS FOR MANUFACTURERS. INCLUDED AMONG THOSE APPROVAL AGENCIES ARE UL, A.G.A., CSA AND ETL.



48" CLASSIC GAS RANGE SPECIFICATIONS AND PLANNING GUIDE

**Model: RJGR4871C (NAT), RJGR4861C (LP)
RJGR4872C (NAT), RJGR4862C (LP)
RJGR4873C (NAT), RJGR4863C (LP)
RJGR4875C (NAT), RJGR4865C (LP)
RJGR4876C (NAT), RJGR4866C (LP)
RJGR4878C (NAT), RJGR4868C (LP)**



SPECIFICATIONS	DIMENSIONS in. (cm)	SPECIFICATIONS	DIMENSIONS in. (cm)
Height To Front Shelf	36 (91.4)	Height to Gas Manifold Center	30 (76.2)
Adjustable Leg/Caster Height	3 (7.6)	Side To Gas Manifold Center	2 1/2 (6.4)
Stub Back Height	7 1/4 (18.4)	Side To Electrical Cord	2 3/4 (6.9)
Overall Width	48 (121.9)	Gas Manifold	1/2 (1.3) NPT
Cabinet Depth	25 (63.5)	Approximate Shipping Weight - lbs. (kg)	
Depth Including Control Panel	29 (73.7)	RJGR4871C, RJGR4861C	560 (254)
Depth Including Knobs	27 1/4 (69.2)	RJGR4872C, RJGR4862C	585 (265)
Depth Including Handle	27 1/2 (69.9)	RJGR4873C, RJGR4863C	545 (247)
Depth With Door Open 90°	40 3/4 (103.5)	RJGR4875C, RJGR4865C	575 (261)
Optional Island Back Height	2 1/2 (6.4)	RJGR4876C, RJGR4866C	575 (261)
Optional High Shelf Height	21 1/2 (54.6)	RJGR4878C, RJGR4868C	600 (272)
Optional High Shelf Depth	10 (25.4)		

All dimensions shown are for planning purposes only. Consult the installation instructions that accompany each product before cutting cabinets or countertops. Jade Products Company reserves the right to change specifications without notice.